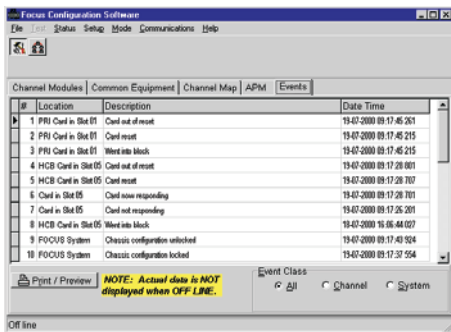


## FOCUS CONFIGURATION SOFTWARE (FCS)

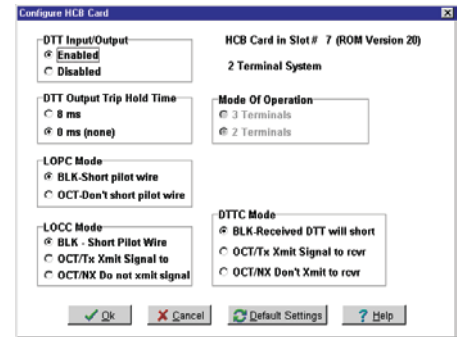
Increasing demand for real time information from the substation has created a need for “intelligent” relay and communication systems that facilitate easy setup, modification and data acquisition. To meet this need, PULSAR designed the FOCUS system, making it 100% software configurable. This lets you configure your FOCUS system using a PC connected to the communications port on the local FOCUS maintenance module. FOCUS Configuration Software (FCS) provides a friendly, Windows-based graphical user interface (GUI) to retrieve alarm and target data, stream errors, and module status information. This “point-and-click” interface lets you quickly set and modify time-slot assignments, channel card settings, and other system parameters.

If your application requires communicating with a remote chassis, FCS includes Remote Node Configuration (RNC) software, enabling you to execute all FCS commands both local and remote. Remote communication is as simple as connecting a PC to any FOCUS node and selecting the desired remote node from a “pull-down” menu. Once communication is established, commands are executed exactly as if you were standing in front of the remote chassis. FOCUS is also compatible with standard SNMP-based network managers using the FCA (FOCUS Communications Agent) module.

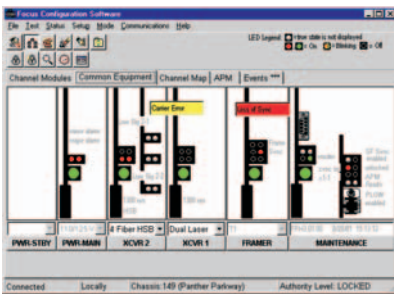
FCS with RNC can save you valuable travel time and expense. You can perform all system modification and data collection without having to visit individual substations.



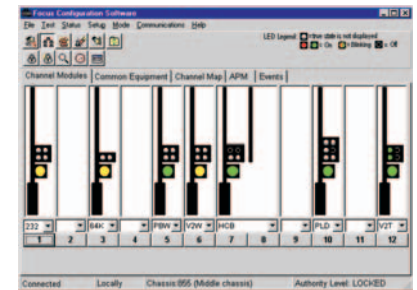
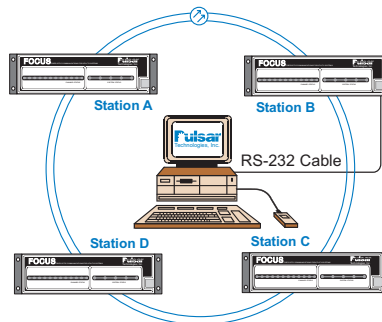
Alarm and Target Information



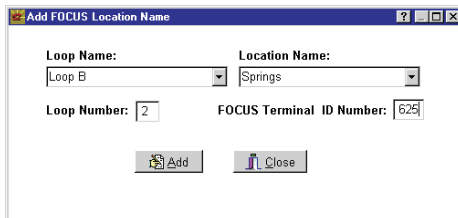
Channel Card Settings



Common Equipment Status



Channel Card Status



Selecting Remote Sites

Digital and Cross-connect Switch

